

5-IN-1 ULTIMATE LIP PALETTE

Five popular Ultimate Lipsticks or Lip Glosses in a convenient container



PRODUCT HIGHLIGHTS

- Available in 14 collections
- Clear UV snap-shut case
- Ranges grouped by Maurice Stein
- Allows for compact travel
- Ideal for studio work
- Great for custom color-matching and blending

Highly pigmented, Cinema Secrets Ultimate Lipstick leaves a smooth, durable finish that lasts all day. Its high-temperature waxes mean it won't melt and won't transfer easily, and mineral pigments virtually eliminate staining.

The Cinema Secrets Ultimate Lip Gloss Palettes have highly reflective shine and color, which helps define and contour the lip. The non-sticky, creamy formula has made it the professional makeup artist's choice for glossy lips.

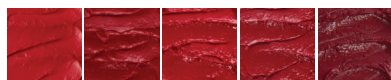
Cinema Secrets 5-in-1 Ultimate Lip Palettes combine five popular lipstick or lip gloss colors in a convenient snap-shut case with a convenient compartment to hold a lip brush in the front of the case. Each of the fourteen palettes provides a range of flattering hues grouped by Maurice Stein—great for compact travel, touch-ups, studio work, or custom color-matching.

>> See back for colors and product information

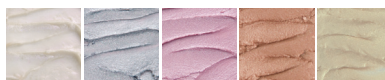
5-IN-1 ULTIMATE LIP PALETTE

Five popular Ultimate Lipsticks or Lip Glosses in a convenient container

LIPSTICK & LIP GLOSS SWATCHES:



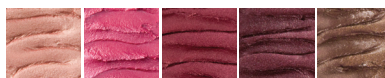
Ultimate Lipstick Palette #01 LPK01
Lipsticks: Simply Rose, Red Rose, True Red, Red Passion, Paprika



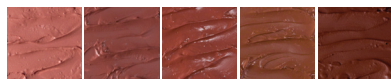
Ultimate Lipstick Palette #02 LPK02
Lipsticks: Oyster, Purple Haze, Pink Satin, Gold Dust, Shimmering Gold



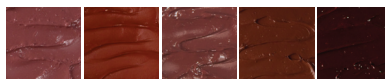
Ultimate Lipstick Palette #03 LPK03
Lipsticks: Sand Stone, Pearl Gold, Bronze, Pearl Sand, Coco



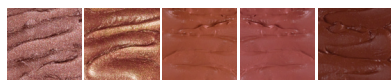
Ultimate Lipstick Palette #04 LPK04
Lipsticks: Pink Bloom, Pearl Pink, Chianti, Millennium, Mauve



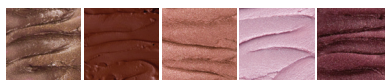
Ultimate Lipstick Palette #05 LPK05
Lipsticks: Summer Sand, Café, Caramel, Mocha, Maple Wood



Ultimate Lipstick Palette #06 LPK06
Lipsticks: Ole, Truffle, Rosewood, Russet, Grape



Ultimate Lipstick Palette #07 LPK07
Lipsticks: Ginger, Pearl Mauve, Cognac, Natural, Hot Sienna



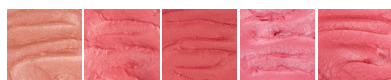
Ultimate Lipstick Palette #09 LPK09
Lipsticks: Mauve, Maple Wood, Pearl Sand, Pink Satin, Millennium



Ultimate Lip Gloss Palette #10 LPK10
Glitter Lipglosses: Pink Cloud, Frost (Iridescent Shimmer), Peach, Pearl (Cream), Lavender



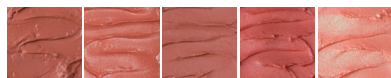
Ultimate Lip Gloss Palette #11 LPK11
Lipglosses: Ice (Clear), Snow White, Gold Dust, Pixie Pink, Iced Lilac



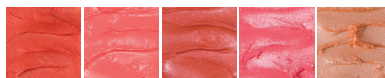
Ultimate Lipstick Palette #12 LPK12
Lipsticks: Pink Glow, Pretty-n-Pink, Rose Pink, Orchid, Pink Flower



Ultimate Lipstick Palette #13 LPK13
Lipsticks: Light Beige, Champagne, Cameo, Sandy, Copper Beige



Ultimate Lipstick Palette #14 LPK14
Lipsticks: Copper, Coral, Carmel Glow, Sunset, Pearl Coral



Ultimate Lipstick Palette #15 LPK15
Lipsticks: Garnet, Orange Flip, Deep Coral, Melon, Shiny Sand

Use and Tips

Use a stainless steel spatula to transfer a small amount of lip color to a stainless steel palette for mixing and application. Apply with a brush (recommended: #04 or #06 Flat or Filbert Kolinsky).

Apply to bare lips or mix with lipsticks or powders for custom colors, textures, and sheerness.

Use Cinema Secrets Ultimate Pro Lip Liners in a complimentary tone to outline the lip line and feather color onto the lip before applying lipstick to extend wear.



Note: Colors may not be depicted accurately because of computer, monitor, and printer limitations and variances.