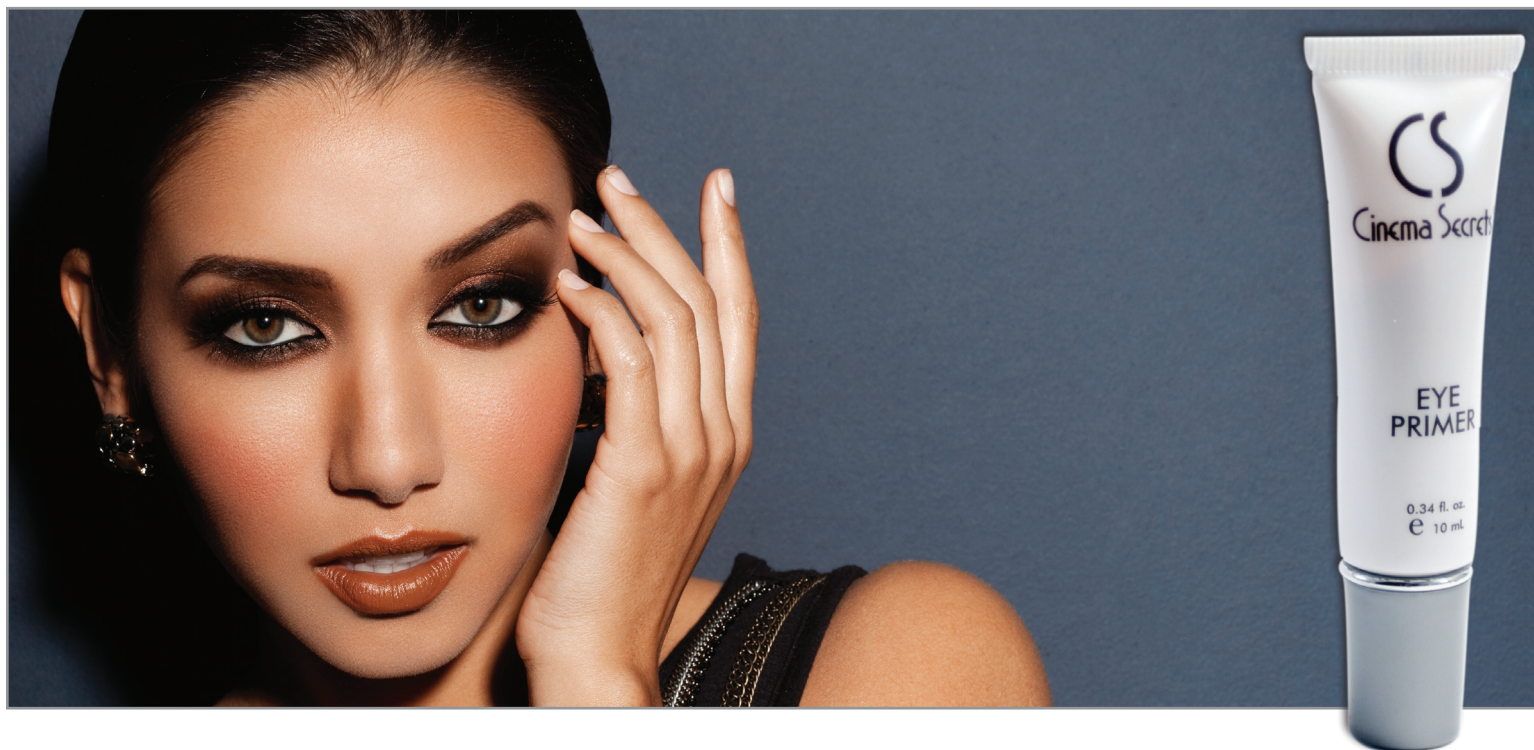


EYE PRIMER

Crease-resistant primer that illuminates and extends any powder based eye shadow



PRODUCT HIGHLIGHTS

- Preserves eye shadow for up to 8 hours
- Keeps eye shadow true to color
- Prevents creasing
- Works with any pressed or loose powder-based eye shadow
- Fills in fine lines
- Safe for all skin types
- Allows for easy blending

A must-have for anyone who wears or applies eye shadow—Cinema Secrets Eye Primer will make any eye shadow stand out and last all day long. Just a touch creates a neutral surface for the most vibrant eye shadow color possible with extended wear. Perfect for even the darkest skin tones or oil-prone skin, Cinema Secrets Eye Primer will keep your eye shadow from smudging or wearing off throughout the day. The primer will also preserve and illuminate matte, shimmer or glitter powders to show the same color on the skin that's shown in the container and prevent creases in fine-line areas.

For best results, apply a small amount of Eye Primer directly to the eyelid and let sit for approximately thirty seconds before applying shadow. Eye shadow should be applied directly onto the primed eyelid and colors can easily be blended together to achieve desired look.