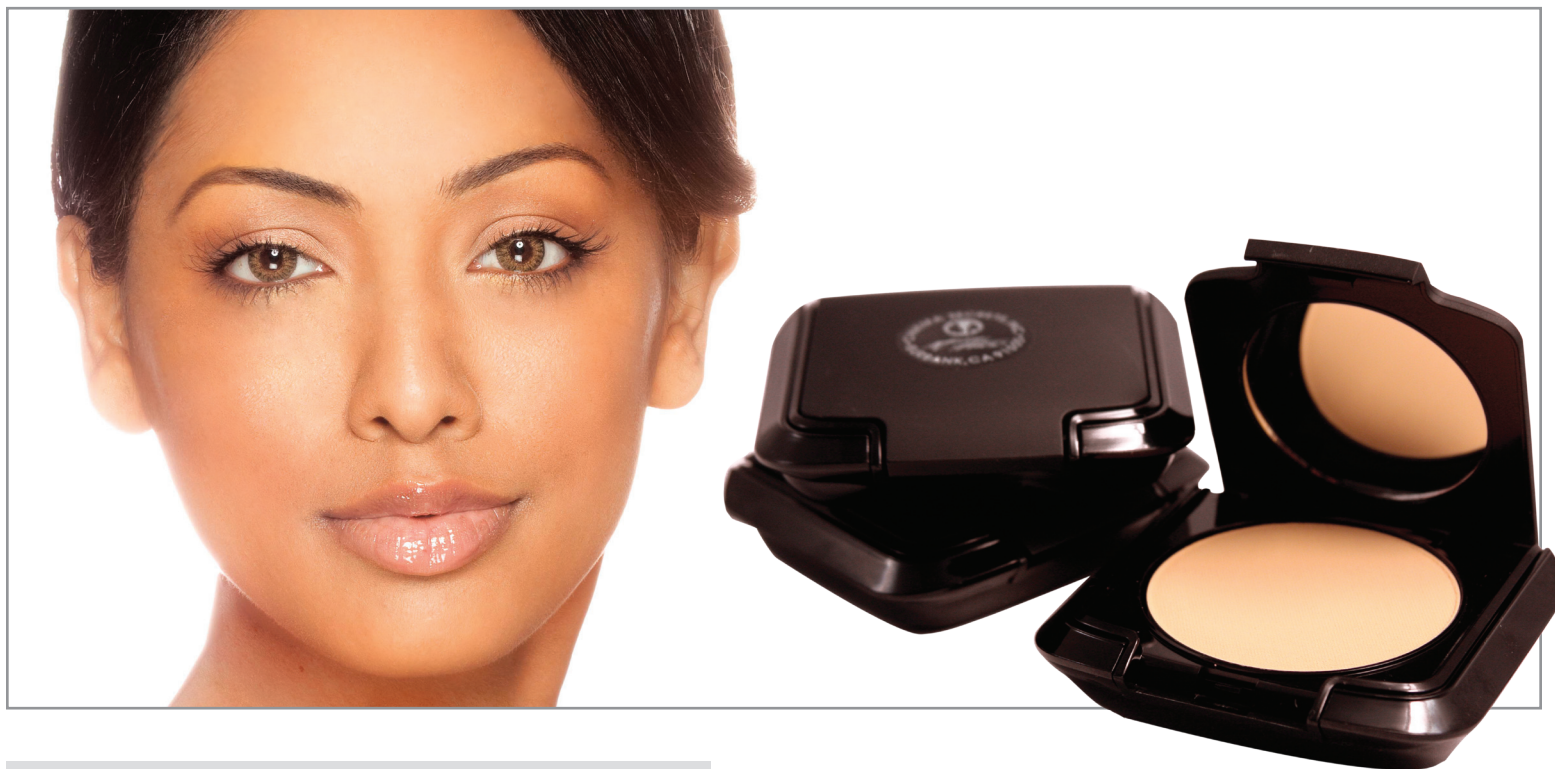


DUAL FINISH MINERALS

Lightweight pressed mineral powders in a convenient container for customized coverage



PRODUCT HIGHLIGHTS

- Apply dry for light concealing
- Apply wet for coverage
- Available in 12 colors to fit light to dark skin tones
- Included sponge for easy application
- Not tested on animals

Cinema Secrets lightweight Dual Finish Mineral pressed powder provides adjustable coverage in a convenient container. Apply dry for light concealing. Achieve coverage by applying wet with Cinema Secrets Moisture Spray.

With convenient case, sponge and compact mirror, application is simple whether on set, at home or on-the-go. For heavier coverage, dampen sponge with Cinema Secrets Moisture Spray before applying. To avoid cross-contamination, never use fingers to apply. Instead, use included non-latex sponge. To remove, use soap and water or any makeup remover.



Note: Colors may not be depicted accurately because of computer, monitor, and printer limitations and variances.

DUAL MINERAL SWATCHES:

