

5-IN-1 FOUNDATION PALETTE

Five coordinating foundations in a convenient container



PRODUCT HIGHLIGHTS

- Available in 11 collections
- Mineral oil- and lanolin-free
- Clear UV snap-shut case
- Corrects, highlights, contours
- Waterproof and sweat-resistant
- Formulated for high-definition use
- Not tested on animals

These highly pigmented foundations were originally formulated by Cinema Secrets founder Maurice Stein for use by fellow makeup artists. Over the years, our signature cosmetic has not only gained recognition among film- and beauty-industry professionals and entertainers, but also set the standard for medical and salon applications.

The creamy silicone based formula applies like a thin second skin, yet provides full coverage to diminish skin discolorations, birthmarks, burn scars, and even large tattoos anywhere on the body! The soft, natural matte finish spreads farther than other foundations and, when properly set with Cinema Secrets Ultimate Setting Powder, will not cake or crease. Water- and perspiration-resistant, Ultimate Foundations will not stain clothing and are safe to apply on the face and body.

Five-in-one color collections allow for easy adjustment and mixing of foundation color and completely custom blends—equally perfect for at-home users whose skin tones change with the seasons and professionals who must match many complexions.

>> See back for colors and product information



5-IN-1 FOUNDATION PALETTE

Five coordinating foundations in a convenient container

FOUNDATION SWATCHES:



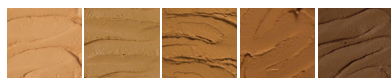
Ultimate Corrector Palette #01 FPK01

Highlighters and red/blue neutralizers for light to dark skin.
Correctors: 601-18, 602-65, 603-21, 605-61, 607-19



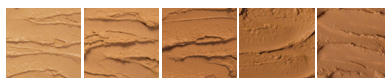
Ultimate Corrector Palette #02 FPK02

Highlighters and red/blue/purple/black neutralizers for medium light to ruddy and dark skin. Correctors: 602-65, 603-21, 605-61, 606-26, 607-19



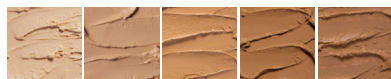
Ultimate Foundation Palette #03 FPK03

Suited to skin with olive and yellow undertones.
Foundations: 301-63A, 302-65A, 303-66A, 201-67, 202-20



Ultimate Foundation Palette #04 FPK04

Suited to skin with light pink, yellow, and coral undertones.
Foundations: 401-71, 402-12, 404-3, 405-17, 514-60



Ultimate Foundation Palette #05 FPK05

Suited to skin with warm pink, beige, and coral undertones.
Foundations: 501-11, 503-29, 506-15, 508-14, 509-62



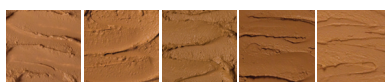
Ultimate Foundation Palette #06 FPK06

Suited to skin with warm, dark pink-beige undertone.
Foundations: 512-49, 509-62, 508-14, 507-45, 506-15



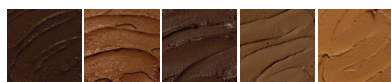
Ultimate Foundation Palette #07 FPK07

Suited to skin with warm, light pink-beige undertones.
Foundations: 507-45, 505-31, 504-28, 502-30, 501-11



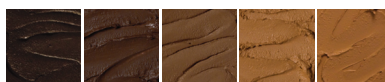
Ultimate Foundation Palette #08 FPK08

Suited to skin with medium to dark golden-tan undertones.
Foundations: 514-60, 405-17, 201-67B, 306-73, 305-72



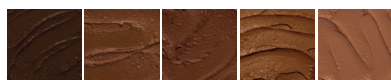
Ultimate Foundation Palette #09 FPK09

Mixture of dark red and olive tones. Foundations: 110-23A, 103-39A, 203-25, 202-20, 201-67A



Ultimate Foundation Palette #10 FPK10

Mixture of colors flattering on olive gold to olive green (ethnic) skin tones.
Foundations: 204-27, 203-25, 202-20, 201-67B, 201-67A



Ultimate Foundation Palette #11 FPK11

Mixture of colors flattering on dark (ethnic) skin tones with light to dark red undertones.
Foundations: 110-23A, 107-40, 106-53, 103-39A, 101-01

Use and Tips

Use a stainless steel spatula to transfer a small amount of makeup to a stainless steel palette for mixing and application.

Apply a thin layer with a brush or non-latex cosmetic sponge moistened with Cinema Secrets Moisture Spray.

For best results, prepare skin before application with Cinema Secrets Foundation Primer. Set makeup with Cinema Secrets Ultralucent Powder; for ultra-extended wear, add the protective finish of Cinema Secrets Super Sealer.

Note: Colors may not be depicted accurately because of computer, monitor, and printer limitations and variances.